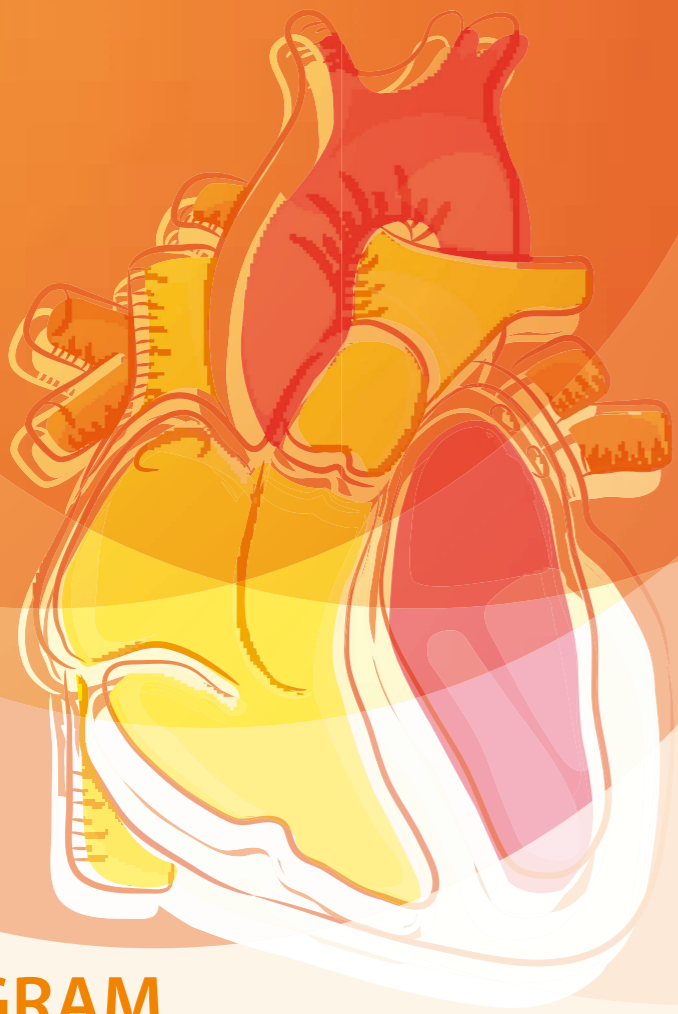


평점 : 대한의사협회 6점 / 내과분과전문의 6점



제7회 The Korean Society of Myocardial Infarction Symposium

대한심장학회 심근경색 연구회 동계 SYMPOSIUM

KAMIR-JAMIR Joint symposium

PROGRAM

일시 : 2016년 11월 19일(토) 장소 : 전남의대 명학회관

Session 1. KAMIR-JAMIR Joint symposium		좌장 : 정명호(전남의대), Prof. Shunichi Miyazaki(Kinki University)
08:30 - 08:45	Effects of new antiplatelet agents in Korean and Japanese. Is it different from western patients ?	정영훈(경상외대)
08:45 - 09:00	Management for patients with atrial fibrillation complicated with coronary artery disease. Is OAC alone enough 1 year after PCI?	Dr. Satoshi Yasuda(Osaka National Cerebrocardiovascular Center)
09:00 - 09:15	New evidence of use warfarin or NOAC in AMI with AF	김병국(연세의대)
09:15 - 09:30	Coronary and thrombotic events in the Kumamoto Earthquake	Dr. Sunao Kojima(Kumamoto University)
09:30 - 09:40	Q & A	
	Dr. Makoto Suzuki(Tokyo Heart Institute), 정우영(서울의대), 나득영(동국의대), 윤경호(원광의대), 류재근(대구가톨릭병원)	
Session 2. Special subset and special treatments in AMI I		좌장 : 김영조(영남의대), 박시훈(이화대의대)
09:40 - 09:55	Microvascular dysfunction in AMI patients-how to detect, how to treat	이주명(성균관의대)
09:55 - 10:10	Clinical impact and optimal treatment of AF in AMI	이상엽(충북의대)
10:10 - 10:25	Position and role of OCT in AMI patients	박재형(고려의대)
10:25 - 10:40	Q & A	
	차태준(고신대의대), 이상곤(울산의대), 윤명호(아주의대), 김 원(경희의대)	
10:40 - 11:00	Coffee break	
Session 3. Special subset and special treatments in AMI II		좌장 : 안태훈(가천의대), 배장호(건양의대)
11:00 - 11:15	Common troubles and trouble-shooting of ECMO in AMI patients	송필상(인제의대)
11:15 - 11:30	Optimal care for resuscitated cardiac arrest patient related with AMI	이장훈(경북의대)
11:30 - 11:45	Practical use of BRS in AMI patients-case selection, advantage and disadvantage	박현웅(경상외대)
11:45 - 12:00	Q & A	
	이준희(한림의대), 오석규(원광의대), 최시원(충남의대), 강웅철(가천의대), 조진만(경희의대)	
12:00 - 13:00	Luncheon Session	
12:00 - 12:15	Beyond statin monotherapy: Benefit of adding ezetimibe to statin therapy in ACS/CHD patients	좌장 : 안영근(전남의대) 김 원(경희의대)
Session 4. Review of published papers from KAMIR database		좌장 : 주승재(제주대의대), 홍택중(부산의대)
13:00 - 13:12	Roles of High-Density Lipoprotein Cholesterol in Patients With Acute Myocardial Infarction.	우종신(경희의대)
13:12 - 13:24	Pharmacoinvasive Strategy Versus Primary Percutaneous Coronary Intervention in Patients With ST-Segment-Elevation Myocardial Infarction: A Propensity Score-Matched Analysis.	심두선(전남의대)
13:24 - 13:36	Two-Year Safety and Efficacy of Biodegradable Polymer Drug-Eluting Stent Versus Second-Generation Durable Polymer Drug-Eluting Stent in Patients With Acute Myocardial Infarction: Data from the Korea Acute Myocardial Infarction Registry (KAMIR)	윤혁준(계명대의대)
13:36 - 13:48	Clinical outcome of statin plus ezetimibe versus high-intensity statin therapy in patients with acute myocardial infarction propensity-score matching analysis.	지미선(전남의대)
13:48 - 14:00	Q & A	
	조상철(광주보훈병원), 한승환(가천의대), 황경국(충북의대), 김성수(광주기독병원)	
Session 5. Review of 2016 KSC abstrats		좌장 : 양주영(일산공단병원), 채성철(경북의대)
14:00 - 14:12	Optimal Timing of Percutaneous Coronary Intervention in Patients With Non-ST-Segment Elevation Myocardial Infarction Complicated by Acute Heart Failure	김민철(전남의대)
14:12 - 14:24	Culprit-only versus multi vessel revascularization in patients with acute myocardial infarction : 3-year clinical outcome in the COREA-AMI Registry	박하욱(가톨릭의대)
14:24 - 14:36	A New Risk Scoring System to Assess Clinical Outcomes in Patients Treated with Contemporary Guideline-Adherent Optimal Therapies after Acute Myocardial Infarction: A Nationwide Cohort Study	조현준(경북의대)
14:36 - 14:48	Complete versus Culprit-Only Revascularization in patients with ST-Elevation Myocardial Infarction and Multivessel Coronary Artery Disease: A Meta-Analysis of Randomized Trials	송여정(강릉아산병원)
14:48 - 15:00	Q & A	
	박종선(영남의대), 안영근(전남의대), 이중희(영남의대), 황진용(경상외대)	
15:00 - 15:20	Coffee break	
Session 6. Case presentation : my best or worst case in AMI intervention		좌장 : 최동주(서울의대), 박헌식(경북의대)
15:20 - 15:32	Case 1	최준혁(제주대의대)
15:32 - 15:44	Case 2	노재형(경북의대)
15:44 - 15:56	Case 3	김상민(충북의대)
15:56 - 16:08	Case 4	박상돈(인하의대)
16:08 - 16:20	Q & A	
	배장환(충북의대), 강원유(광주보훈병원), 오주현(성균관의대), 홍영준(전남의대), 허성호(가톨릭의대)	
16:20	Closing Remark	



대한심장학회 심근경색연구회
The Korean Society of Myocardial Infarction